

A Photogrammetric Mapping and Geospatial Consulting Firm

Eagle Eye News

For Surveying, Engineering, Planning and Land Management Companies

Volume 1, Issue 1

October 2008



Aerial Geospatial, LLC.
1924 West Begonia Drive
Beverly Hills, Florida 34465

John Hrivnak
Owner/President
jhrivnak@aerialgeospatial.com

Phone: 352-270-8483
Fax: 866-446-4361
Cell: 352-445-0430

www.aerialgeospatial.com

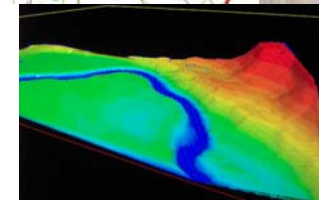
Aerial Geospatial is structured as a rapid response team and answers your needs in a timely manner! We do business efficiently thus keeping our rates low. Our savings are then passed on to you.

Our resources, at a glance provide Aerial Photography, Aerial Triangulation, Photogrammetric Mapping and Vector Extraction (TRUE 3D terrain models) and georeferenced orthophoto mosaics. We work entirely within Microstation V8/XM and or AutoCAD 2009 and supply data to meet your specifications in their entirety.

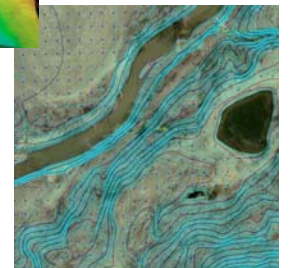
SUPPLYING AERIAL TOPOGRAPHIC SURVEYS



ALLOWING YOU TO IMPLEMENT YOUR PROJECT



3D MODELING



News at a Glance

- Ordering our Services (What you need to know) see pg 2
- Accuracies see pg 2
- Aerial Geospatial acquires second ASPRS Certified Photogrammetrist
- South Florida GIS Expo 2008 see pg 3
- International LIDAR Mapping Forum 2009 see pg 3
- ASPRS Annual Conference 2009 see pg 3
- FTP Site see pg 3

FOR YOUR TRANSPORTATION PROJECTS



Turn Aerial Photography into a Highly Accurate CAD/GIS tool.

Aerial Geospatial works directly within AutoCAD and Microstation V8 or XM.

No translations. Therefore no opportunity for misrepresented or missing data.

Ordering Services and

Conveying Proper Project Specifications

Prior to the mapping of your site, Aerial Geospatial needs to know:

Where is your site located?

We need a clear outline of your area on a USGS quad sheet, street map, or other similar map. Parcel numbers, street addresses or lot numbers are not specific enough. We use this information to configure the aerial photo mission and the placement of ground control.

What is the scale and contour interval your project requires?

Generally surveyors will think of scale in terms of sheet layout. Hard copy output scales do not correlate to the accuracy of the survey work. In Photogrammetry, scale sets the level of positional accuracy of the mapping and has a direct relationship to the horizontal and vertical accuracy.



Similarly, photography that supports 1-foot contour interval will be flown at a lower altitude than that for a 2-foot contour interval. Lower altitude imagery requires more photographs to cover a site and more ground control thus resulting in higher cost. Map standards that are most often specified: National Map Accuracy Standards (NMAS) and the ASPRS Positional Accuracy Standards.

It is critical that you specify your accuracy requirements.

What are your expected deliverables?

You will need to specify the format for your mapping deliverable (e.g., AutoCAD, MicroStation, ESRI ArcGIS) and what version you are using. Other deliverables might include mass points and Breaklines or an Orthophoto of the site.

Ground Verification

Aerial mapping that is properly controlled and mapped will meet the below requirements, but this is never a replacement for field verification.

Contours

90% of the elevations determined from the solid line contours shall have an accuracy of $\frac{1}{2}$ the contour interval or better with respect to true elevation and the remaining 10% shall not be in error by more than one contour interval. In the areas where vegetation obscures the ground, the contours are shown as dashed lines, they shall be depicted as accurately as possible from the stereoscopic model.

Spot Elevations

90% of all spot elevations placed on the maps shall have an accuracy of at least $\frac{1}{4}$ the contour interval, and the remaining 10% shall not be in error by more than $\frac{1}{2}$ the contour interval.

| Negative Scale | Map Scale | Contour Interval | Spot Elevation Vertical Accuracy | Horizontal Accuracy |
|----------------|-----------|------------------|----------------------------------|---------------------|
| 1"=200' | 1"=20' | 1' | 0.15 | 0.5 |
| 1"=330' | 1"=40' | 1' | 0.25 | 0.8 |
| 1"=500' | 1"=50' | 2' | 0.45 | 1.25 |
| 1"=660' | 1"=100' | 2' | 0.5 | 1.6 |
| 1"=1000' | 1"=200' | 4' | 2 | 2.5 |



*American Society for Photogrammetry
& Remote Sensing Certification Program*

Aerial Geospatial is proud to announce the availability of two nationally recognized ASPRS Certified Photogrammetrist's.

These two CP's not only offer over 55 years of combined knowledge and experience in the photogrammetric world, but also hold degrees in:

- Photogrammetric Engineering
 - Bachelor of Science in Biology (used in wetland studies)
 - Bachelor of Arts in Environmental Science and Policy
- and are continuing their Education in:
- Master of Arts in Geography
 - Bachelor of Science in Information Technology/Software Engineering

This is one of the many ways Aerial Geospatial achieves standardization, consistency and satisfaction on every deliverable!



Files too large for E-mail

FTP is Here

Dedicated 1 Terabyte of onsite storage.

*For a secure login, email us for your username
and password*

jhrivnak@aerialgeospatial.com



Next ILMF Conference – New Orleans, USA, January 26 – 28, 2009



*Be sure to look us up at
the following events!*



MARCH 9 - 13, 2009. BALTIMORE, MD